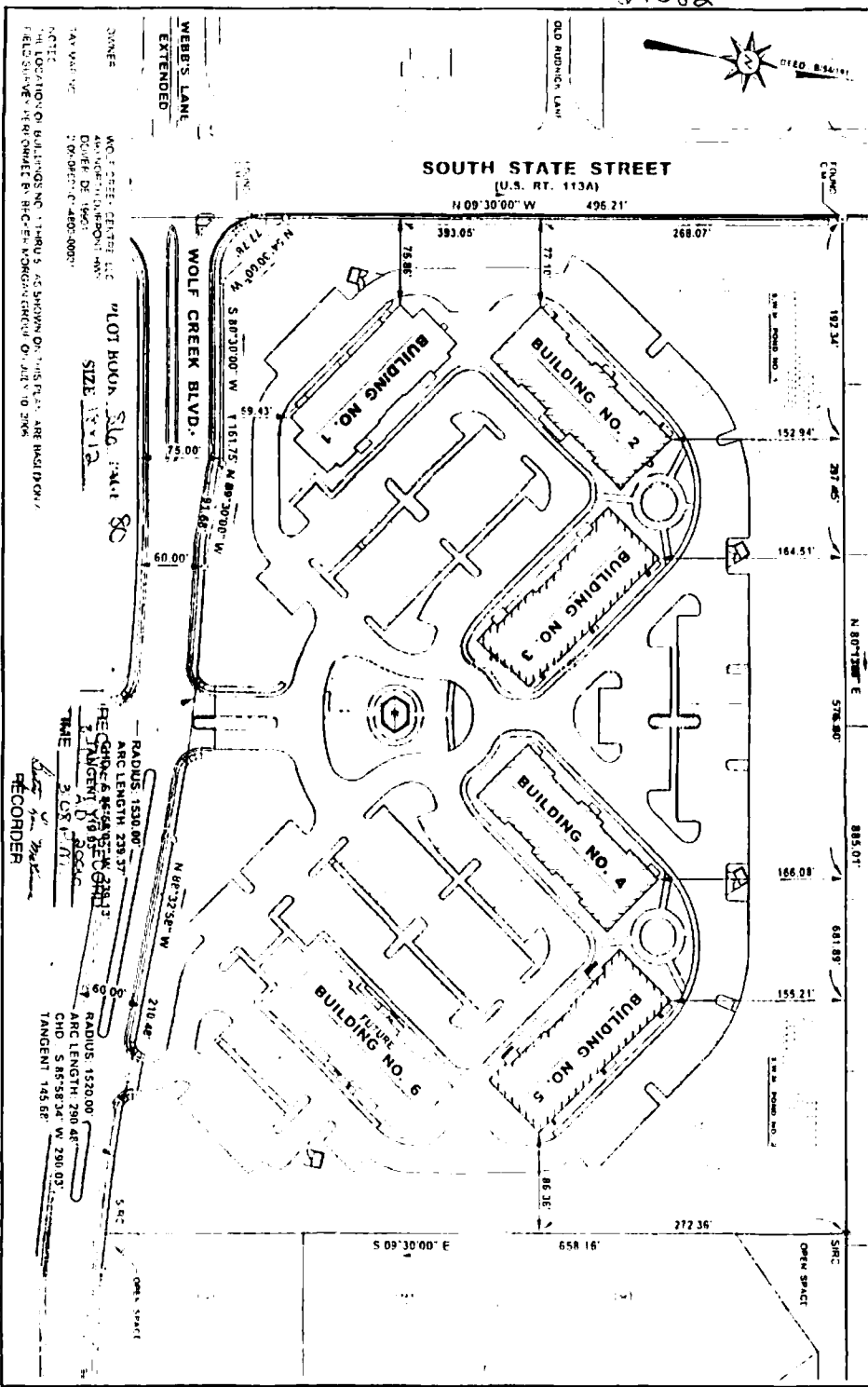


***WOLF CREEK CENTRE***

***DECLARATION PLAN***

601082



**DECLARATION PLAN - JULY 10, 2006**  
**WOLF CREEK CENTRE**  
 SOUTH STATE STREET EXTENDED  
 EAST DOVER HUNDRED  
 KENT COUNTY, DELAWARE



ARCHITECTURE  
 ENGINEERING  
 DIVERSITY  
 702 S. Governors Ave.  
 Dover, DE 19904  
 PH 302 734 7950  
 FAX 302 734 7965

NO.	2002069
SCALE	1" = 100'
DATE	ADJ/06
PREPARED BY	S JL
<b>C-1</b>	